

# Kelvin Hughes Navigation ECDIS

## NEW REGULATIONS COMPLIANT ECDIS

The new fully compliant ECDIS from Kelvin Hughes operates on an integrated display incorporating all the market leading software functionality from the previous MantaDigital™ ECDIS, updated with new time saving features for a truly multifunction networked navigation and situational awareness bridge system.

### ECDIS

Kelvin Hughes ECDIS meets the new IEC 61174 Edition 4 standard, is compliant to ENC S-57 and S-63 and C-Map chart formats including updates provided via online services.

With easy and fast installation, the system is multifunctional, compatible with the new Kelvin Hughes navigation radar display and bridge system, enabling the sharing of sensors over the Ethernet network and featuring a radar overlay option.

### VERSION 4 PRESENTATION LIBRARY

The ECDIS uses the latest IHO standards, specifically the latest presentation library version 4 within S-52. This contains instructions for the drawing engine within the ECDIS on how to display symbols, colours and line styles on the screen. This brings greater consistency in the display of the ENC data, reduces alarm fatigue and provides information such as anchorage area names with landmarks, lights and buoys viewable by hovering the cursor over the object.

### INSTACHART

The efficient software architecture dramatically reduces the waiting time of the user, considerably improving efficiency and safety.

- ENC installation is now twice as fast.
- Chart redraw when altering the zoom level is almost instantaneous with no black screen.

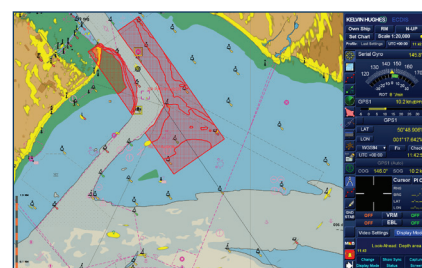
### NEW FEATURES

Kelvin Hughes ECDIS comes with a host of new and improved features to benefit the user:

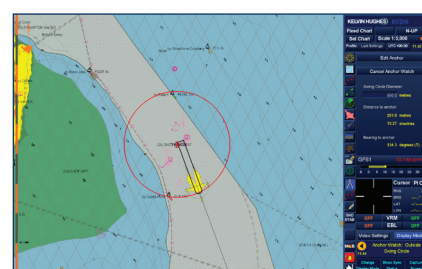
- Look ahead (marker and depth areas relevant to the ships course at an adjustable time period).
- Anchor watch (visual and audible alarm of actual position in relation to swing circle).
- Anchor dragging risk (notifies if the anchor may be dragging, exceeding the new IEC 61174 standard).
- Navtex compatibility (removes the need to print messages as they can now be displayed on screen).
- Maximise chart area (provides the ability to hide the menu side bar).
- Best scale option (automatically selects the best chart viewing scale).
- AIS and radar target layers (supports additional layers).
- AIO (via C-Map CAES) display.
- One click chart updates and permit renewal.
- Remote diagnostics.
- Improved route planning tools (this enables detailed passage plans to be created and exported to pdf).

### DISPLAY TECHNOLOGY

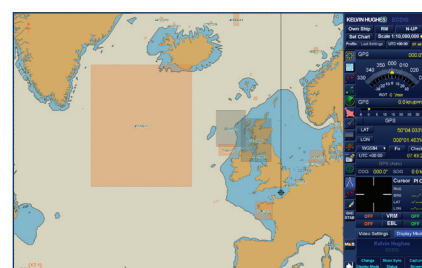
The state of the art LED widescreen display is available in 22" and 26" sizes and is an easy to install console display with an integrated 5th generation processor and 64bit operating system which can be easily integrated into any bridge.



Look Ahead



Anchor Watch

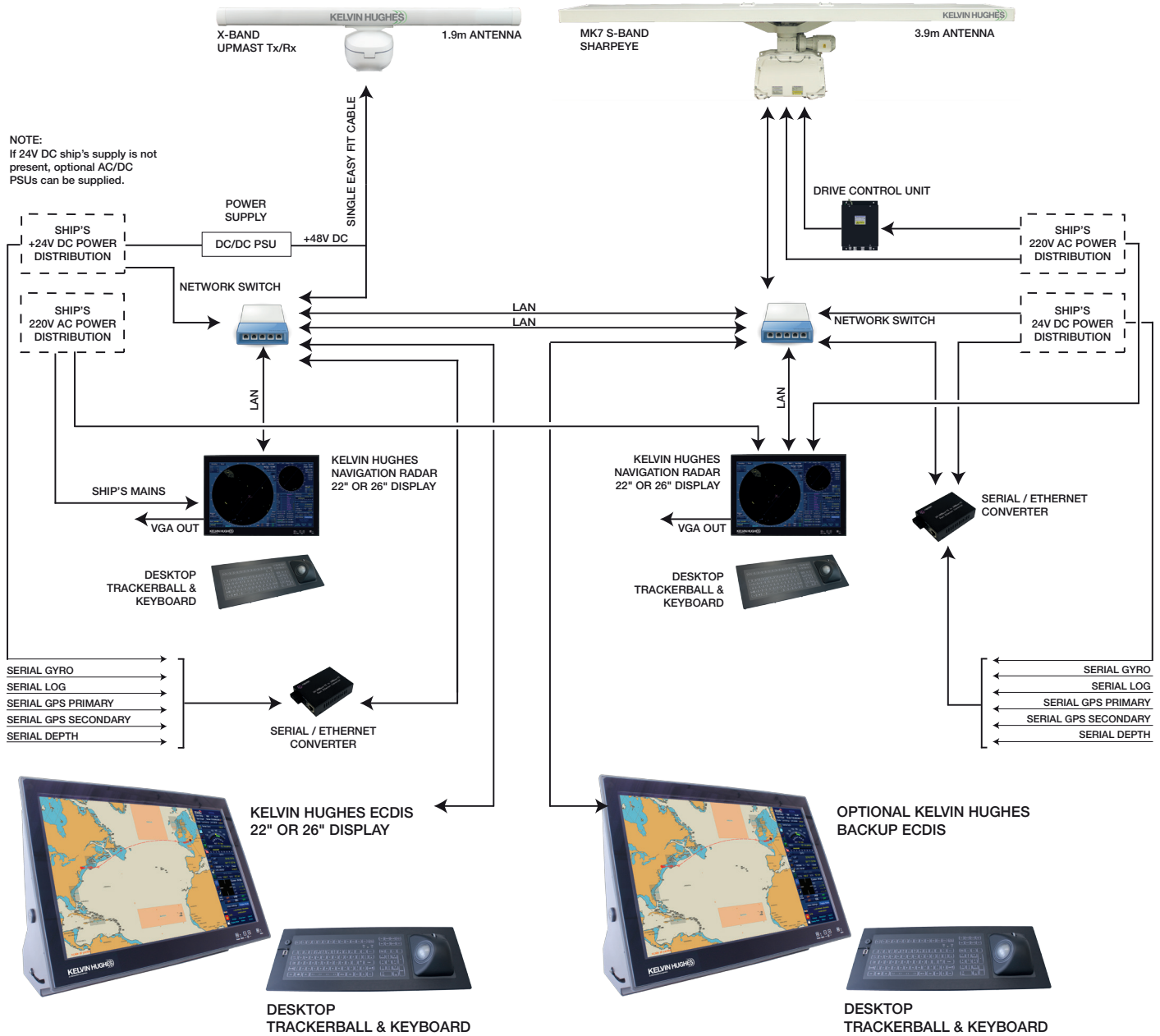


AIO (via C-Map CAES)



Route Planning

# NETWORKED MULTIFUNCTION ECDIS



## HENSOLDT UK

Voltage, Mollison Avenue,  
Enfield  
EN3 7XQ, UK  
t: +44 (0)1992 805 200

## HENSOLDT International Offices

**Benelux:**  
Rotterdam: t: +31 10 472 4050  
**Asia:**  
Singapore: t: +65 6331 4268  
**Scandinavia:**  
Copenhagen: t: +45 8611 2888

[www.uk.hensoldt.net](http://www.uk.hensoldt.net)

[cms.sales@hensoldt.net](mailto:cms.sales@hensoldt.net)



We assume no responsibility for the correctness of the contents. Subject to change without notice.  
© HENSOLDT UK 2019. HENSOLDT, its logo and the product names are registered trademarks.  
All rights reserved. // UL 21102019 E